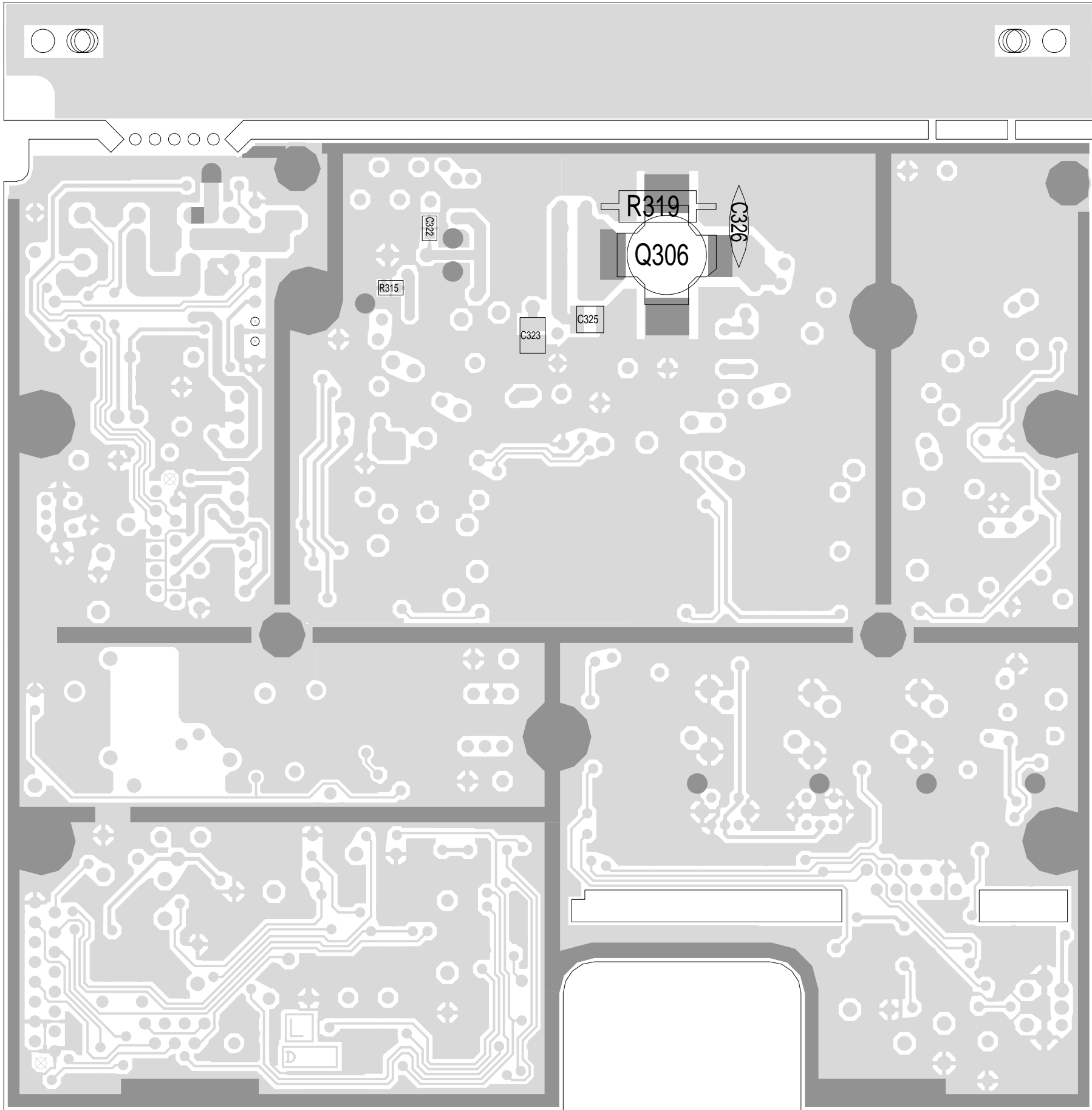


11A	DIODE COPPER FUSE UPDATES	RPS	27/05/98	7A	MODS TO IMPROVE MANUFACTURABILITY.	J.F.	KB	DE	MB	24/7/93			
10A	ADDED CAPS FOR EMC	DBH		6B	CHANGED NOISE BLANKER VARIANTS.	J.F.	J.F.	M.L.	M.L.	26/11/92			
9A	CREATED A VARIANT TABLE FOR DUAL BAND.	YH	25/5/95	6A	ADDED NOISE-BLANKER. ADDED R420A & R421A.	J.F.	J.F.	J.F.	J.F.	29/10/92			
8A	ADDED PROGRAMMABLE BAND-WIDTH CTRY.	MC	29/9/94	5A	MODS TO NOISE-BLANKER & CHANGED B840 DIODES TO B842B	J.F.	J.F.	M.L.	M.L.	18/9/92			
7D	CAD-WANG	MC											
REV/ISS	AMENDMENTS	DRAWN	CHKD	D.O.	APVD	DATE	REV/ISS	AMENDMENTS	DRAWN	CHKD	D.O.	APVD	DATE

*BAND	*R133	*R135	*R139	*R151	*R152	*R162	*R163	*R164	*R165	*R166	*R167	*R168	*R170	*R194	*C120	*C189	*C190	*Q116	*Q117	*Q118	*Q119
NARROW	-	-	-	3K3S	390KS	0S	0S	0S	-	-	-	-	-	0S	-	470PS	470PS	-	-	-	-
MID	-	-	-	3K3S	390KS	0S	0S	0S	-	-	-	-	-	0S	-	470PS	470PS	-	-	-	-
WIDE	-	-	-	3K3S	390KS	0S	0S	0S	-	-	-	-	-	0S	-	470PS	470PS	-	-	-	-
DUAL-BAND	3K9S	220KS	10KS	1K5S	220KS	22KS	18KS	3K3S	470KS	560KS	22KS	10KS	6K8S	2K2S	390KS	47UF16A	150PS	BFR31	BC848	BC848	BC848

© TAIT ELECTRONICS  
 T2000-200 MID-BAND MOBILE RADIO WITH DUAL-BAND OPTION

PROJECT: T2000 DESIGNER: RPS FILE NAME: 120211A FILE DATE: 15/06/98 SHEETS: 2

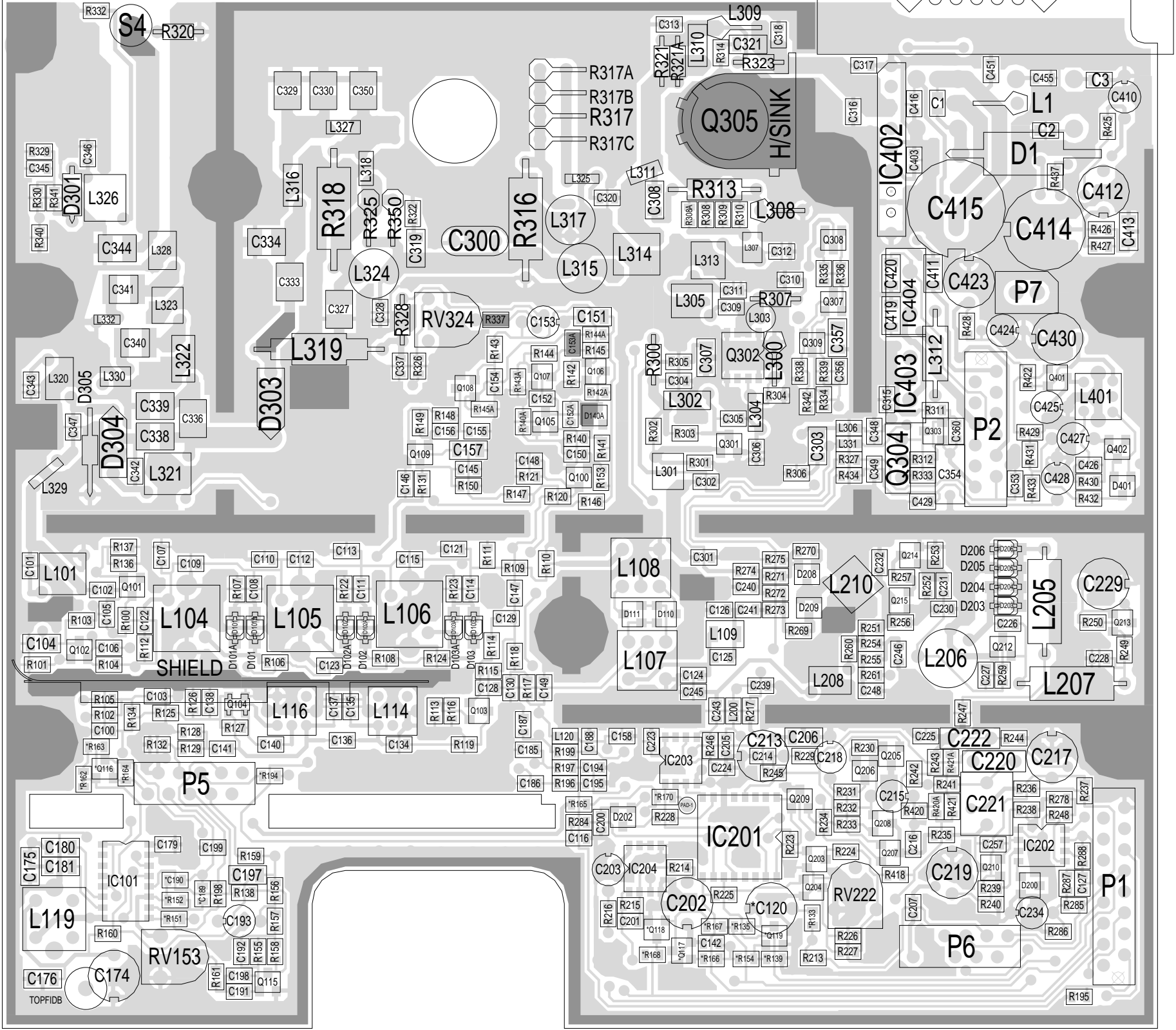


11  
10  
9  
8  
7  
6  
5  
4  
3  
2  
1

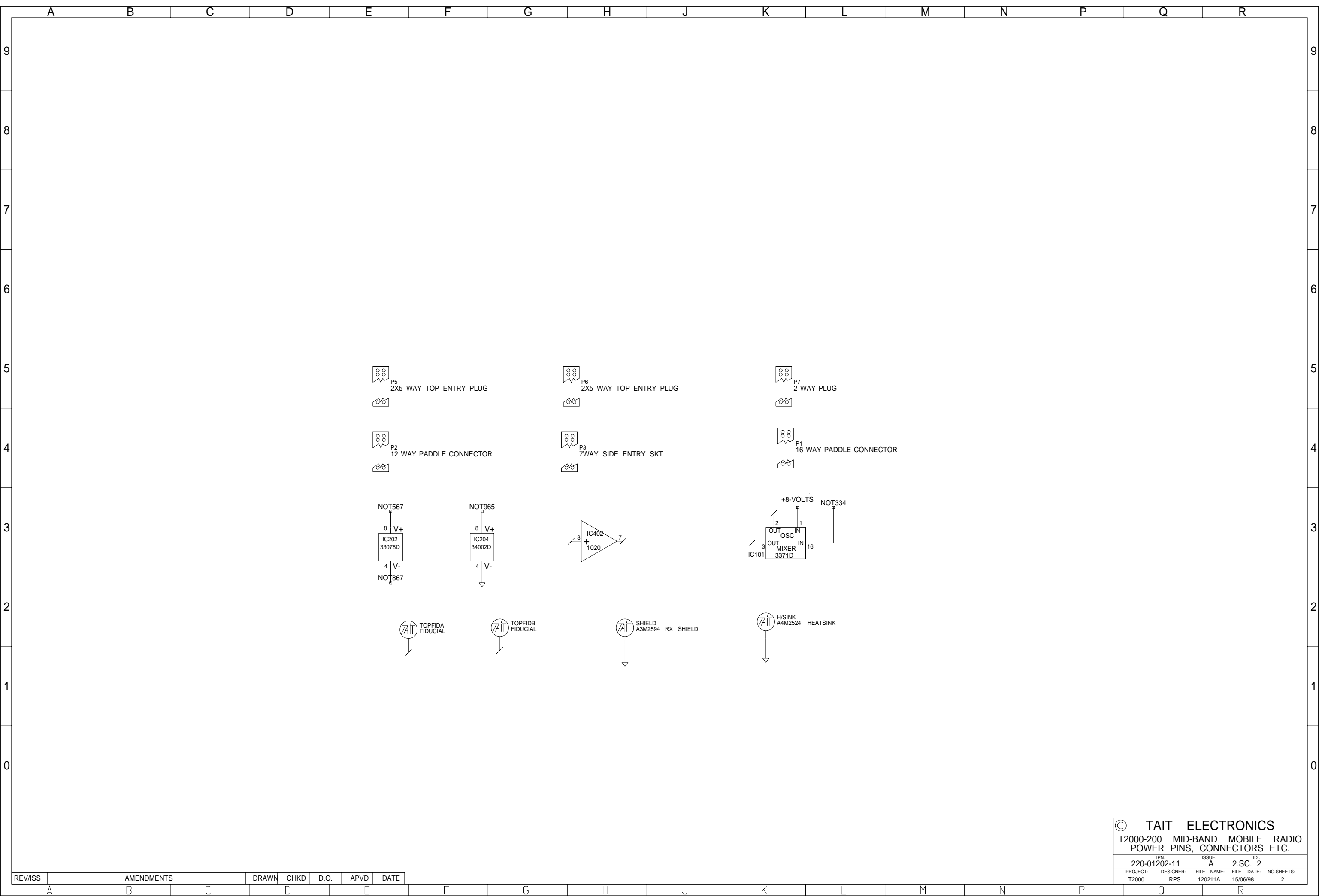
L K J H G F E D C B A

TAIT ELECTRONICS	IPN:	ISS:	ID:	DATE:
	220-01202-11	11B	2.BA	9 Jul 1998
T2000-200 PCB LAYOUT - BOTTOM SIDE				

11  
10  
9  
8  
7  
6  
5  
4  
3  
2  
1



A B C D E F G H J K L



<b>TAIT ELECTRONICS</b>			
T2000-200 MID-BAND MOBILE RADIO POWER PINS, CONNECTORS ETC.			
IPN: 220-01202-11	ISSUE: A	ID: 2.SC. 2	
PROJECT: T2000	DESIGNER: RPS	FILE NAME: 120211A	FILE DATE: 15/06/98
		NO. SHEETS: 2	

REV/ISS	AMENDMENTS	DRAWN	CHKD	D.O.	APVD	DATE
A						
B						
C						
D						
E						
F						
G						
H						
J						
K						
L						
M						
N						
P						
Q						
R						